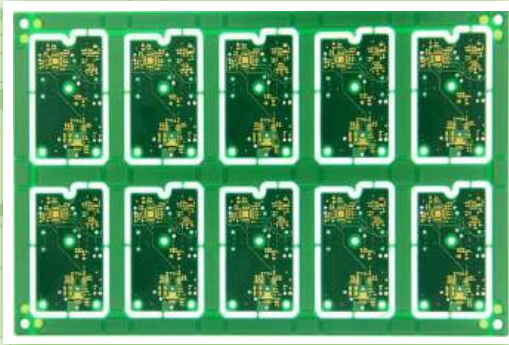


NexGen

PCBA Depaneling Router Bits



Optimised Tool Design
PCBA Depaneling of Emerging Materials

↑ Up Draft Router Bits (Right Cut) Machining with Spindle and Vacuum on Same Side of PCBA

| Diamond Cut Router | | Chip Breaker Router | | High Performance Depaneling Router | |
|--------------------|------|---------------------|------|------------------------------------|-------|
| ød | l | ød | l | ød | l |
| 1.00 | 5.00 | 1.00 | 5.00 | 1.40 | 7.00 |
| 1.20 | 7.00 | 1.20 | 7.00 | 1.50 | 8.00 |
| 1.40 | 7.00 | 1.40 | 7.00 | 1.60 | 8.00 |
| 1.50 | 8.50 | 1.50 | 8.50 | 1.80 | 8.00 |
| 1.60 | 8.50 | 1.60 | 8.50 | 2.00 | 8.00 |
| 2.00 | 9.00 | 2.00 | 9.00 | 2.40 | 10.50 |
| 2.20 | 9.00 | 2.20 | 9.00 | 2.50 | 10.50 |
| 2.40 | 9.00 | 2.40 | 9.00 | | |

Article P626 RHRC Article P726 RHRC Article P650 RHRC **Longer Tool Life**

↓ Down Draft Router Bits (Left Cut) Machining with Spindle and Vacuum on Opposite Sides of PCBA

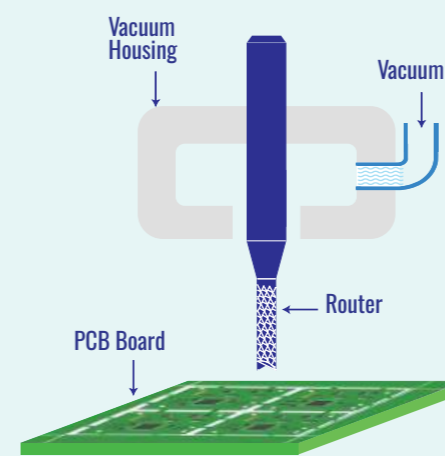
| Diamond Cut Router | | Chip Breaker Router | | 2-Flute Down Draft Aluminium Router | |
|--------------------|------|---------------------|------|-------------------------------------|------|
| ød | l | ød | l | ød | l |
| 1.00 | 5.00 | 1.00 | 5.00 | 1.00 | 4.00 |
| 1.20 | 7.00 | 1.20 | 7.00 | 1.20 | 4.00 |
| 1.40 | 7.00 | 1.40 | 7.00 | 1.40 | 4.00 |
| 1.50 | 8.50 | 1.50 | 8.50 | 1.50 | 8.00 |
| 1.60 | 8.50 | 1.60 | 8.50 | 1.60 | 8.00 |
| 2.00 | 9.00 | 2.00 | 9.00 | 2.00 | 9.00 |
| 2.20 | 9.00 | 2.20 | 9.00 | 2.20 | 9.00 |
| 2.40 | 9.00 | 2.40 | 9.00 | 2.40 | 9.00 |

Article P627 LHRC Article P727 LHRC Article P122 LHRC

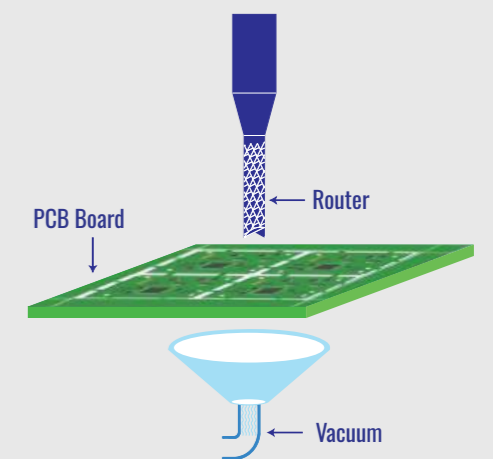
| 2 Flute Updraft Aluminium Router | | 2 Flute Router Diamond Coated | | Single Flute Router | |
|----------------------------------|-------|-------------------------------|-------|---------------------|------|
| ød | l | ød | l | ød | l |
| 1.00 | 4.00 | 1.00 | 3.00 | 0.40 | 2.00 |
| 1.20 | 4.00 | 1.20 | 3.00 | 0.50 | 3.00 |
| 1.40 | 4.00 | 1.40 | 3.00 | 0.60 | 3.00 |
| 1.50 | 8.00 | 1.50 | 3.00* | 0.80 | 3.00 |
| 1.60 | 8.00 | 1.50 | 3.00* | 1.00 | 3.00 |
| 1.80 | 8.00 | 1.60 | 5.00 | 1.20 | 4.00 |
| 2.00 | 9.00 | 1.80 | 5.00 | 1.40 | 4.00 |
| 2.20 | 9.00 | 2.00 | 4.00* | 1.50 | 4.00 |
| 2.40 | 9.00 | 2.00 | 4.00* | 1.60 | 5.00 |
| 3.00 | 10.00 | 2.40 | 4.00* | 1.80 | 5.00 |
| | | 2.50 | 6.00 | 2.00 | 8.00 |
| | | | | 2.40 | 8.00 |
| | | | | 2.50 | 9.00 |
| | | | | 3.00 | 9.00 |
| | | | | 3.175 | 9.00 |

Article P024 RHRC Article X830R RHRC Article P926 RHRC

↑ Up Draft Machine Setup



↓ Down Draft Machine Setup



Tool Features & Benefits

| | | |
|------------------------------|------------------------|-------------------|
| F Strong Cutting Edge | Cutting Edge Retention | Wide Flute Space |
| B Absorbs Impact Load | Smooth Finish | Dust Free Routing |

NexGen Coatings

All dimensions are in mm

D : Ø 1/8" (3.175 mm)
Common Shank

On Request
Shank Dia 3mm

On request : Inch sizes /
Special dimensions

* : Non stock items /
Articles

PCBA Depaneling Router Bits



IND-SPHINX
PCB DRILLS | PCB ROUTERS



IND-SPHINX PRECISION LTD

Plot Number 28, Sector 5 Parwanoo
Himachal Pradesh India 173220

+91 1792 232860 / 352600

customerfocus@indsphinx.com www.indsphinx.com



AXIS Europe GmbH

Danziger Str. 3, 88250 Weingarten

+49 (0)751 560 1589 - 0

info@axis-europe.eu www.axis-europe.eu



QUALITY • PRECISION • CONSISTENCY



PEOPLE